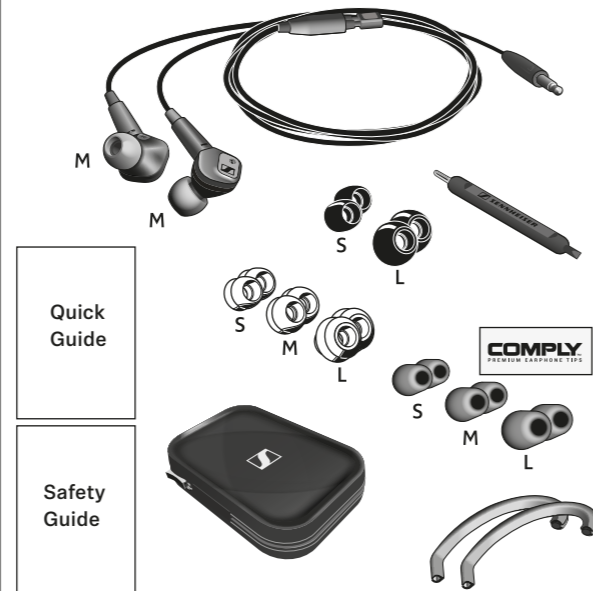


IE 80 S

Quick Guide
 Kurzanleitung
 Guide rapide
 Instrucciones resumidas
 Guida rapida
 Beknopte handleiding
 Guida rápido
 Kvikguide
 Snabbguide
 Pikaopas



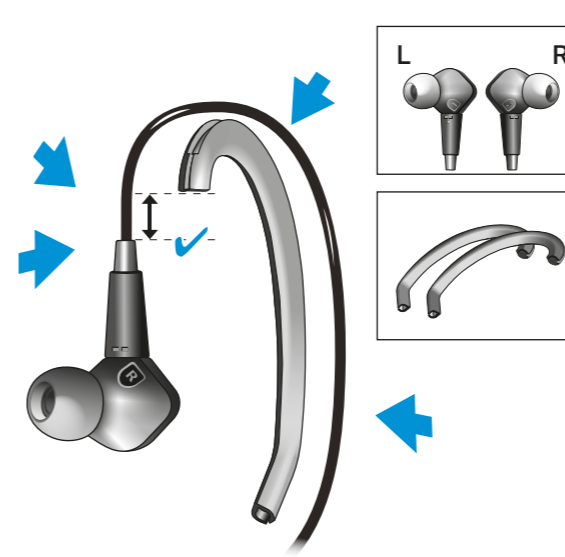
Package includes | Lieferumfang | Contenu de la livraison | Contenido del paquete | O pacote inclui | Inhoud van de verpakking | Contenuto della confezione | Pakken indeholder | Förpackningen innehåller | Pakkaussisältö



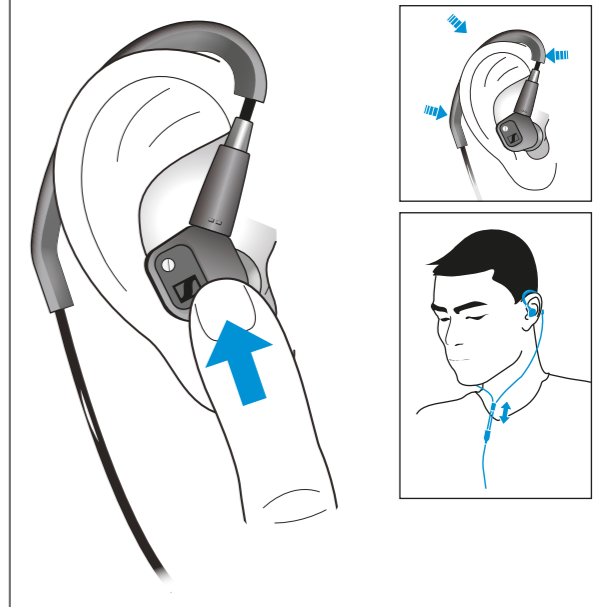
Quick Guide

Safety Guide

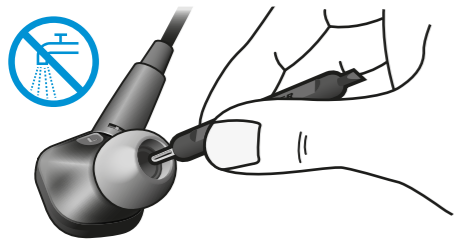
Adjusting the ear hooks | Ohrbügel anpassen | Ajuster les tours d'oreille | Ajustar los ganchos para las orejas | Ajustar os botões de ouvido | Oorbeugels afstellen | Regolazione degli uncini auricolari | Sådan justeres ørekrogene | Justera öronbyglarna | Korvasankojen säätäminen



Wearing the earphones | Ohrhörer aufsetzen | Port des écouteurs | Llevar los auriculares | Utilizar os auriculares | De oortelefoons dragen | Indossare gli auricolari | Sådan bæres øretelefonerne | Sätt på hörlurarna | Kuulokkeiden käyttö



Cleaning | Reinigen | Nettoyage | Limpieza | Limpeza | Schoonmaken | Pulizia | Rengøring | Rengöring | Puhdistus



Specifications and accessories | Technische Daten und Zubehör | Caractéristiques techniques et accessoires | Especificaciones técnicas y accesorios | Dados técnicos e acessórios | Technische specificaties en toebehoren | Dati tecnici e accessori | Specifikationer og tilbehør | Specificationer och tillbehör | Tekniset tiedot ja oheisvarusteet

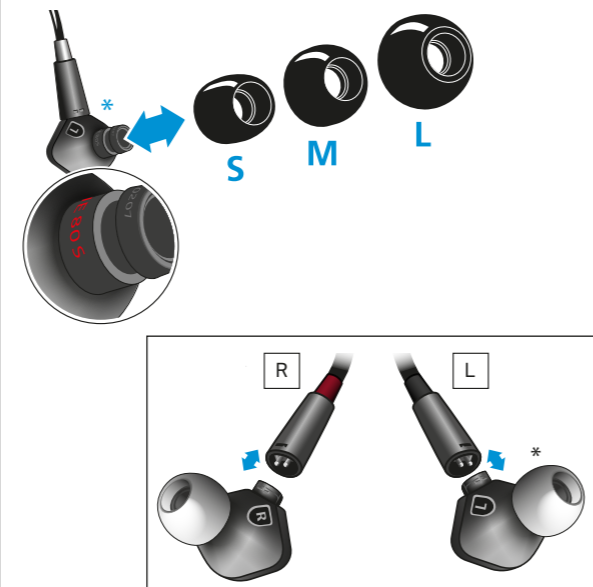


www.sennheiser.com

Sennheiser electronic GmbH & Co. KG
 Am Labor 1, 30900 Wedemark, Germany
 www.sennheiser.com

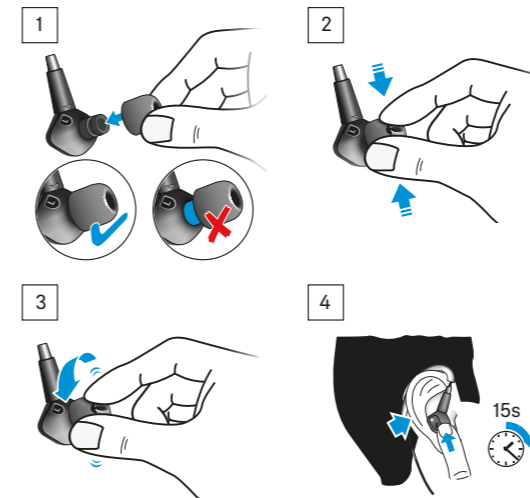
Printed in China, Publ. 08/17, 572476/A01

Replacing the cable/ear adapters | Kabel/Ohradapter austauschen | Remplacer le câble / les adaptateurs d'oreilles | Sustitución del cable / de los adaptadores para las orejas | Substituir o cabo/adaptadores de ouvido | Kabel/ooradapters vervangen | Sostituzione del cavo/degli adattatori | Sådan udskiftes kablet/øreadapterne | Byt kabel/öronadaptrar | Kaapelin / korva-adapterien vaihto



*IE 80 S model name under ear tips.

Replacing the Comply™ foam tips | Comply™ Ohradapter austauschen | Remplacer les embouts en mousse Comply™ | Sustituir las almohadillas de espuma Comply™ | Substituir as extremidades de espuma Comply™ | Vervangen van de Comply™ schuimrubber oordopjes | Sostituzione dei cuscinetti imbottiti Comply™ | Sådan udskiftes Comply™ skumspidserne | Byt Comply™-skumdelarna | Comply™-korvatyyntyjen vaihtaminen



For more information about Comply™ foam tips: www.complyfoam.com/sennheiser/
 Comply is a registered trademark of Hearing Components.

Adjusting/Tuning the bass | Bass anpassen/einstellen | Ajuster / Régler les basses | Ajustar/sintonizar los graves | Regular/Sintonizar os graves | De bas instellen | Regolazione dei bassi | Sådan justeres/fintunes bassen | Justera basen | Basson säätäminen



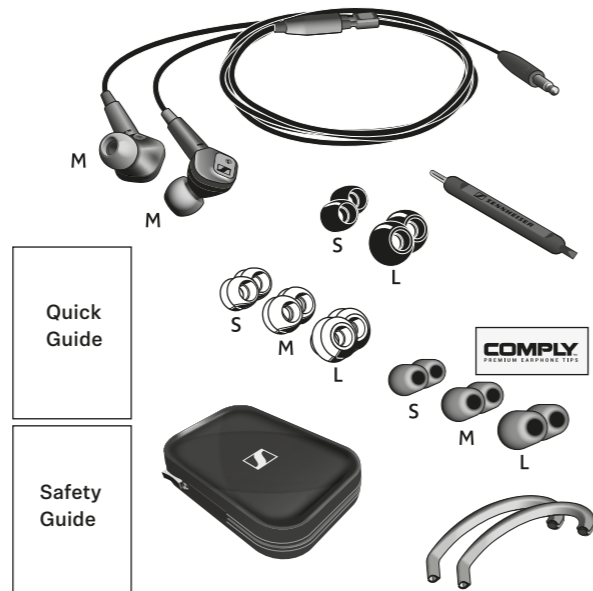
IE 80 S

Quick Guide

Σύντομος οδηγός
Skrócona instrukcja
Hızlı Kılavuz
Краткая инструкция
クイックガイド
快速入门说明书
快速指南
빠른 안내서
Panduan ringkas



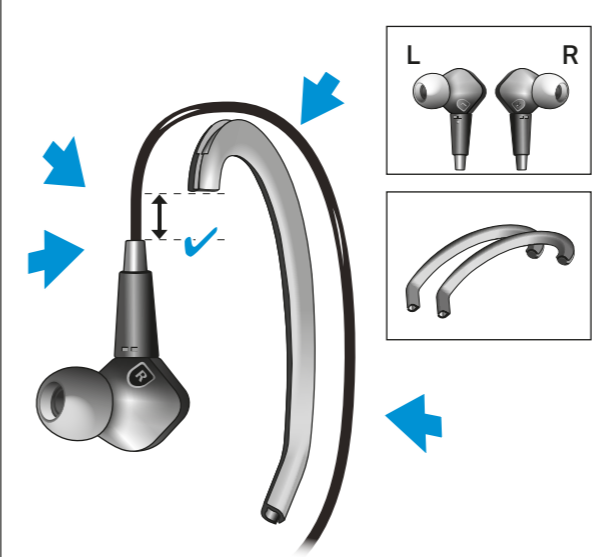
Package includes | Περιεχόμενα πακέτου | Zestaw obejmuje | Ambalaj içeriği | Комплектация | パッケージに同梱されている品目 | 套装包括 | 包装内含 | 포장 내용물 | Isi kemasan



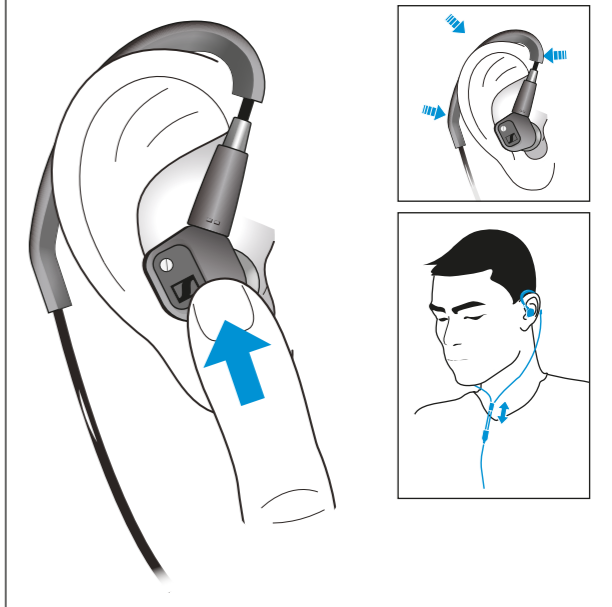
Quick Guide

Safety Guide

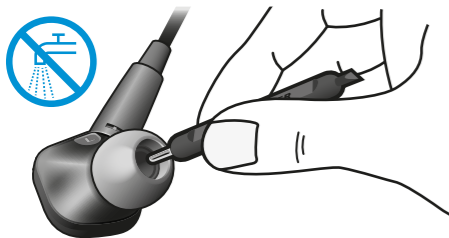
Adjusting the ear hooks | Προσαρμογή των αγκίστρων αυτιού | Regulacja pataków zausznych | Kulak kancalarının ayarlanması | Регулировка заушников | イヤーフックの調整 | 调整耳扣 | 調整耳掛 | 이어 후크 조정 | Menyesuaikan kait telinga



Wearing the earphones | Εφαρμογή των ακουστικών | Noszenie słuchawek | Kulaklıkların takılması | Ношение наушников | イヤホンの着用 | 佩戴耳机 | 佩戴耳機 | 이어폰 착용 | Memakai earphone



Cleaning | Καθαρισμός | Czyszczenie | Temizleme | Чистка | クリーニング | 清洁 | 清潔 | 청소하기 | Membersihkan



Specifications and accessories | Χαρακτηριστικά και παρελκόμενα | Dane techniczne i akcesoria | Teknik Veriler ve Aksesuarlar | Технические характеристики и аксессуары | 技術データとアクセサリ | 技術参数和附件 | 技術参数和附件 | 제품 사양 및 액세서리 | Data Teknis dan Aksesoris

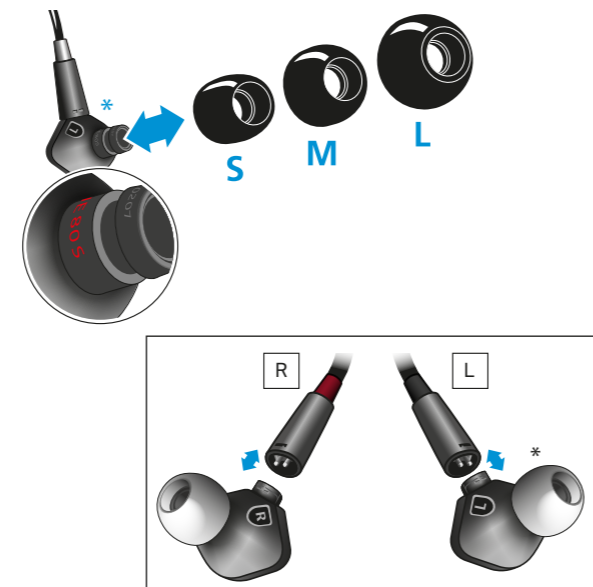


www.sennheiser.com

Sennheiser electronic GmbH & Co. KG
Am Labor 1, 30900 Wedemark, Germany
www.sennheiser.com

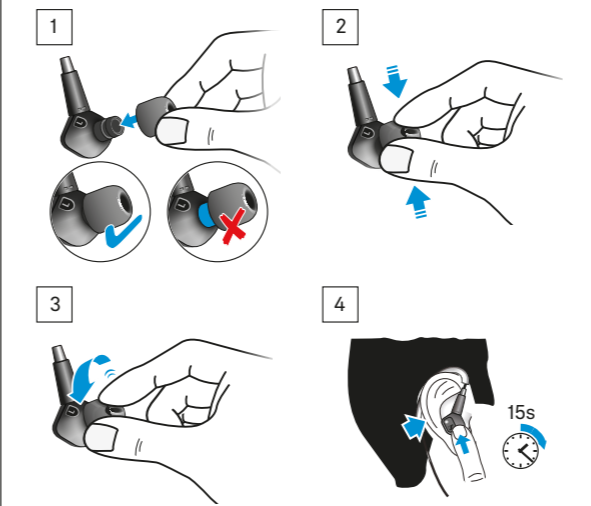
Printed in China, Publ. 08/17, 572476/A01

Replacing the cable/ear adapters | Αντικατάσταση του καλωδίου/των μαξιλαριών αυτιού | Wymiana przewodu/wkładek | Kablo/kulak adaptörlerinin değiştirilmesi | Замена кабеля / насадок | ケーブル/イヤアダプターの交換 | 更换电缆适配器/耳垫 | 更換線纜/耳適配器 | 케이블/이어 어댑터 교체 | Mengganti adaptor telinga/kabel



*IE 80 S model name under eartips.

Replacing the Comply™ foam tips | Αντικατάσταση των καλυμμάτων αυτιού από αφρώδες υλικό Comply™ | Wymiana nakładek piankowych Comply™ | Comply™ sünger uçların değiştirilmesi | Замена наконечников Comply™ | Comply™ フォームチップの交換 | 更换 Comply™ 泡沫头 | 更換 Comply™ 泡沫頭 | Comply™ 폼 팁 교체 | Mengganti ujung busa Comply™



For more information about Comply™ foam tips:
www.complyfoam.com/sennheiser/
Comply is a registered trademark of Hearing Components.

Adjusting/Tuning the bass | Ρύθμιση/Συντονισμός των μπάσων | Regulacja/dostrajanie basów | Basın ayarlanması | Регулировка низких частот | 低音の調整/チューニング | 调整/调节低音 | 調整/調節低音 | 베이스 조정/튜닝 | Menyesuaikan/Menyetel bass

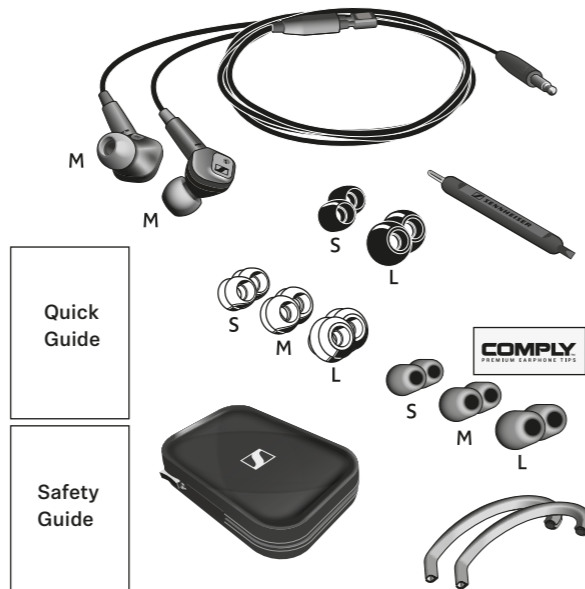


IE 80 S

Kiirjuhised
Ísá pamáciba
Trumpasis vadovas
Stručná příručka
Rýchly sprievodca
Gyors ismertető
Ghid rapid
Бърз наръчник
Hitri vodič
Kratki vodič

SENNHEISER

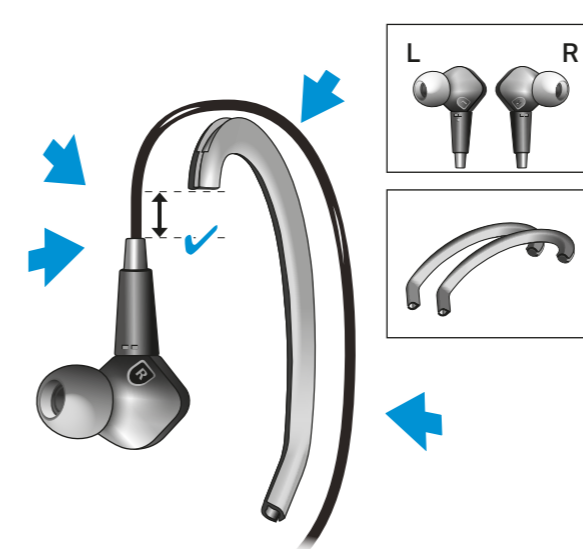
Pakendi sisu | Iepakojuma saturs | Pakuotės turinys |
Obsah balení | Balenie obsahuje | A csomag tartalma |
Conținutul pachetului | Съдържание на опаковката | Vsebina paketa | Paket sadrži



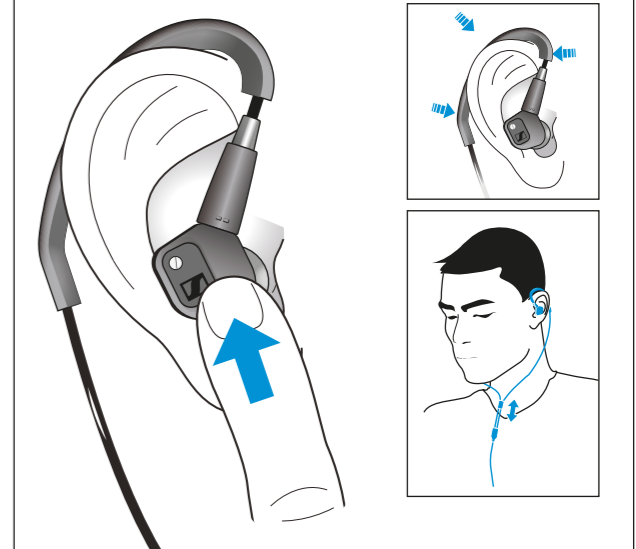
Quick Guide

Safety Guide

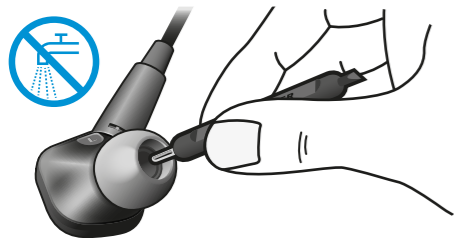
Kõrvakonsude reguleerimine | Ausu äķišu pielāgošana | Ausų kabliukų reguliavimas | Nasazení brýlových háků | Nastavenie ušných držiakov | A fülakasztók beállítására | Ajustarea difuzoarelor auriculare | Регулиране на наушниците | Prilaganje ušesnih zank | Podešavanje nastavaka za uši



Kõrvaklappide kandmine | Austiņu nēsāšana | Ausinių nešiojimas | Nošení sluchátek | Nosenie slúchadiel | A fülhallgató viselése | Cum se poartă căștile auriculare | Носене на слушалките | Nošenje slušalk | Nošenje slušalica



Puhastamine | Tirišana | Valymas | Čištění | Čistenie | Tisztítás | Curățarea | Почистване | Čišćenje | Čišćenje



Tehnilised andmed ja lisaseadmed | Specificācijas un piederumi | Specificācijas ir priekšdaļi | Specificace a příslušenství | Specificácie a príslušenstvo | Specificációk és kiegészítők | Specificații și accesorii | Спецификации и аксесоари | Specificacije in pribor | Tehnički podaci i dodatna oprema



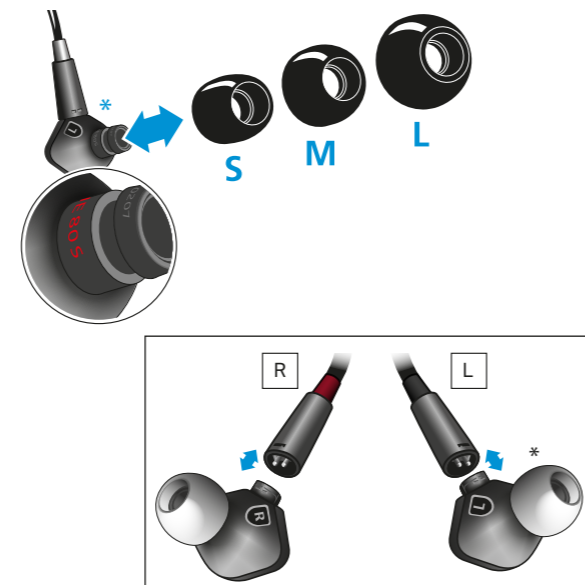
www.sennheiser.com

Sennheiser electronic GmbH & Co. KG

Am Labor 1, 30900 Wedemark, Germany
www.sennheiser.com

Printed in China, Publ. 08/17, 572476/A01

Kaabli/kõrvaadapterite asendamine | Kabela-auss adapteru nomaiņa | Laido / ausų adapterių keitimas | Výměna kabelu / ušních koncovek | Výmena kábla / ušných nástavcov | A kábel/fülhallgató adapter cseréje | Înlocuirea cablului/adaptoarelor pentru urechi | Смяна на кабела/ушните адаптери | Zamenjava kabla/ušesnih čepkov | Zamjena prilagodnika za kabel/uši

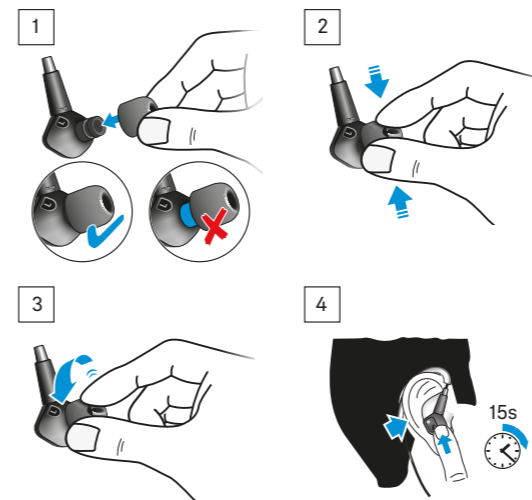


*IE 80 S model name under eartips.

Comply™ vahtkummist otsikute asenda

COMPLY
PREMIUM EARPHONE TIPS

Comply™ putu uzgāļu nomaiņa | Poroloninių antgalių „Comply™“ keitimas | Výměna pěnových ušních koncovek Comply™ | Výmena penových koncoviek Comply™ | A Comply™ hab csúcsok cseréje | Înlocuirea accesoriilor din spumă Comply™ | Смяна на накрайниците Comply™ | Zamenjava blazinic čepkov Comply™ | Zamjena pjenastih nastavaka Comply™



For more information about Comply™ foam tips:
www.complyfoam.com/sennheiser/
Comply is a registered trademark of Hearing Components.

Bassi reguleerimine/häälestamine | Basa regulēšana | Reguliavimas / basų derinimas | Nastavení/vyladění basů | Nastavenie/ladenie basov | A basszus beállítására/hangolása | Ajustarea/Reglajul basului | Регулиране/Настройка на баса | Prilaganje/uglaševanje basa | Podešavanje/prilagođavanje zvuka basa

